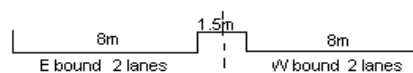
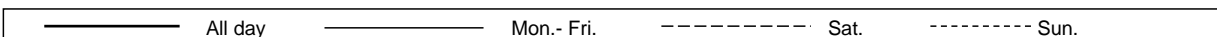
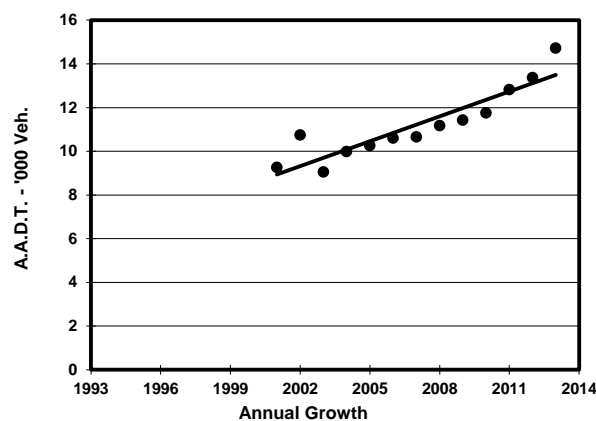
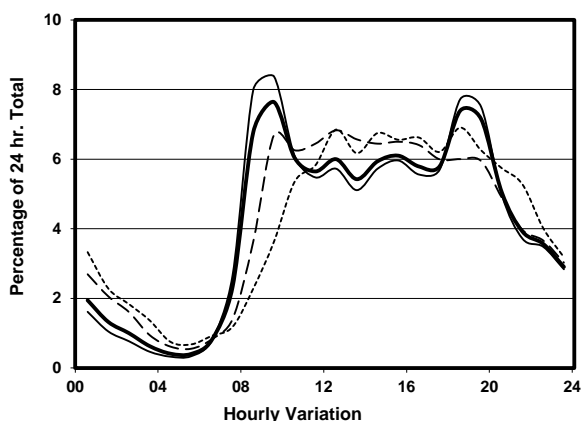
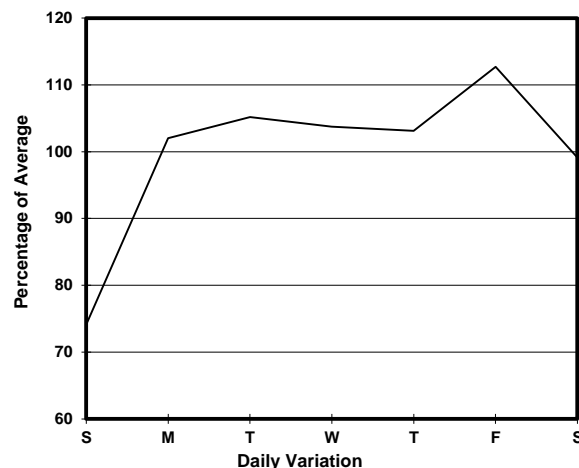
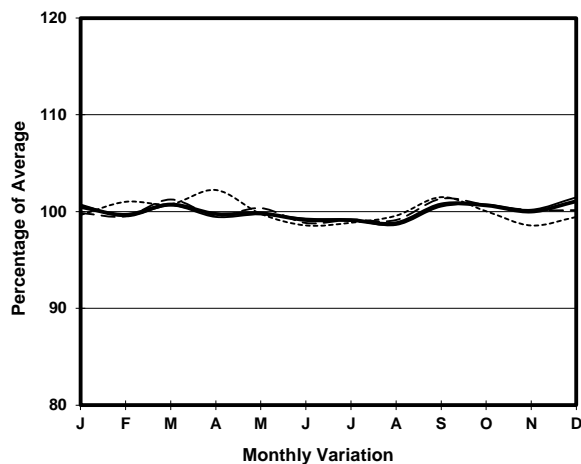


YEAR 2013
 COVERAGE (B) STATION 4221
 ROAD NETWORK MAJOR
 ROAD TYPE EXPRESSWAY

LINK HUNG HOM BYPASS (from SLIP RD TO CHEONG TUNG RD S to SLIP RD FROM CHEONG TUNG RD S)



1. TRAFFIC FLOW VARIATION AND GROWTH



2. TRAFFIC CHARACTERISTICS (BY DIRECTION)

Parameter	All - Day	Mon. - Fri.	Sat.	Sun.
EAST BOUND				
A.A.D.T.	7130	7660	7110	5250
R 12 / 24 - %	70.8	71.9	69.3	65
R 16 / 24 - %	91.5	92.5	88.7	87.2
AM Peak Hour	0900-1000	0900-1000	0900-1000	0900-1000
One-way flow at AM peak hour	610	720	520	200
T - % (AM)	-	6.5	-	-
PM Peak Hour	1800-1900	1800-1900	1600-1700	1800-1900
One-way flow at PM peak hour	530	590	420	360
T - % (PM)	-	10	-	-
Prop.of commercial vehicles - 16 hr.	-	8.4	-	-
WEST BOUND				
A.A.D.T.	7590	8070	7690	5820
R 12 / 24 - %	70.9	72.4	69.1	63.8
R 16 / 24 - %	89.7	91.2	86.7	84.2
AM Peak Hour	0900-1000	0800-0900	0900-1000	0900-1000
One-way flow at AM peak hour	520	600	470	200
T - % (AM)	-	6.8	-	-
PM Peak Hour	1800-1900	1800-1900	1600-1700	1800-1900
One-way flow at PM peak hour	560	620	530	400
T - % (PM)	-	5.4	-	-
Prop.of commercial vehicles - 16 hr.	-	8.4	-	-

3. OTHER INFORMATION AND COMMENT

4. Vehicle classification and occupancy - Monday to Friday

Time		Class of vehicle									
		Motor	Private	Taxi	Private	PLB	Goods veh.		Non	Fr. Bus	
		Cycle	Car		LB		Light	M & H	Fr. Bus	SD	DD
0700-0800	Pro	1.3	10.4	58.6	1.3	5.2	7.8	1.3	6.5	0.0	7.5
	Ocp	1.0	1.9	1.9	1.0	2.8	1.3	1.0	7.6	0.0	16.4
0800-0900	Pro	0.3	28.9	48.8	0.7	4.3	8.0	1.3	5.0	0.3	2.5
	Ocp	1.0	1.5	2.1	3.5	9.3	1.8	2.0	16.7	19.0	27.5
0900-1000 Peak hour	Pro	0.3	29.4	50.0	0.0	2.8	10.6	2.2	2.8	0.0	1.9
	Ocp	1.0	1.5	2.2	0.0	10.7	2.0	1.3	8.3	0.0	12.4
1000-1100	Pro	1.1	16.2	51.8	0.4	2.2	20.2	2.9	3.3	0.0	1.8
	Ocp	1.0	1.8	2.2	2.0	10.2	1.9	1.5	9.7	0.0	8.9
1100-1200	Pro	0.0	22.5	44.4	0.9	2.8	21.1	2.3	4.1	0.0	1.9
	Ocp	0.0	1.6	2.1	1.5	8.3	1.7	1.6	11.4	0.0	9.6
1200-1300	Pro	1.5	26.0	49.0	0.0	1.5	13.5	2.6	4.4	0.0	1.6
	Ocp	1.0	1.9	2.2	0.0	9.8	1.9	2.3	8.4	0.0	9.8
1300-1400	Pro	1.8	25.9	42.5	0.9	0.9	14.8	3.7	6.9	0.0	2.5
	Ocp	1.3	1.7	2.4	1.5	13.0	1.8	1.6	13.8	0.0	9.7
1400-1500	Pro	0.4	29.6	38.5	0.9	2.7	17.0	4.0	4.5	0.0	2.4
	Ocp	1.0	1.6	1.9	3.5	10.2	1.7	1.7	13.2	0.0	8.1
1500-1600	Pro	0.9	29.5	45.2	0.9	1.8	12.5	1.8	4.6	0.0	2.7
	Ocp	1.0	1.7	2.6	1.0	11.5	1.5	1.3	9.7	0.0	8.1
1600-1700	Pro	1.7	30.8	38.9	0.9	2.1	15.0	1.7	6.8	0.0	2.1
	Ocp	1.0	1.9	2.1	1.0	7.8	1.7	1.8	12.1	0.0	9.3
1700-1800	Pro	1.3	32.9	45.1	0.4	1.7	10.5	2.5	3.4	0.0	2.2
	Ocp	1.0	1.6	2.3	8.0	11.3	1.8	1.3	15.0	0.0	11.7
1800-1900	Pro	0.0	33.5	49.6	0.0	3.6	5.7	0.7	4.6	0.0	2.2
	Ocp	0.0	1.8	2.2	0.0	15.7	1.8	1.5	16.5	0.0	29.8
1900-2000	Pro	1.4	33.2	54.5	0.0	3.1	2.8	0.4	2.8	0.0	1.9
	Ocp	1.5	2.0	2.1	0.0	17.0	1.5	2.0	19.9	0.0	28.3
2000-2100	Pro	1.2	32.0	52.1	0.0	4.1	2.4	1.8	3.6	0.0	2.8
	Ocp	1.5	1.6	2.3	0.0	12.9	1.3	1.0	12.3	0.0	17.8
2100-2200	Pro	0.8	24.8	66.0	0.8	0.0	2.3	0.0	2.3	0.0	3.2
	Ocp	1.0	2.1	2.1	2.0	0.0	1.0	0.0	11.3	0.0	14.2
2200-2300	Pro	0.0	23.3	69.9	0.0	1.7	0.6	0.0	1.7	0.0	2.8
	Ocp	0.0	1.9	1.9	0.0	2.3	1.0	0.0	1.0	0.0	12.4
16 hours	Pro	0.8	27.7	49.3	0.4	2.5	10.8	1.9	4.1	0.1	2.3
	Ocp	1.1	1.7	2.2	2.3	10.9	1.8	1.6	12.5	19.0	15.2

Legend

Pro. Proportion of vehicles in % (Sum may not add up to 100% due to figure rounding)
Ocp. Average occupancy of vehicles
M&H Medium and Heavy